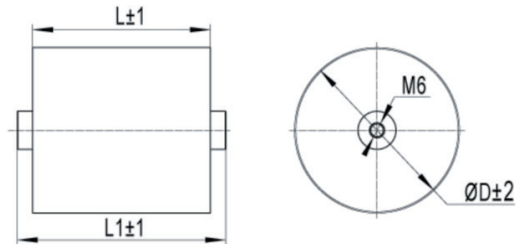
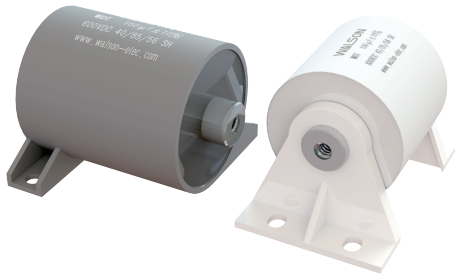


WDT DC-Link 电容器 (轴向)

DC-Link Capacitor (Axial-type)

外形图 Outline Drawing



单位 Unit: mm

特点 Features

- 玛拉胶带或圆塑壳，阻燃环氧树脂灌封
- 安装灵活方便，引出方式可多样化选择
- 无感式结构，具有ESL低、ESR小，高频大电流承受能力，温升低，寿命长等特点
- Mylar tape or cylindrical plastic case, filled with flame retardant epoxy resin
- The installation is flexible and convenient, and the way of extraction can be varied
- Non inductive structure, low ESL, small ESR, high frequency and high current capacity, low temperature, long life and other good characteristics

主要用途 Typical Applications

- 广泛应用于DC-Link电路中，作高频滤波和退耦用途
- 广泛应用于电力电子电路中，作隔直耦合用途
- 广泛应用于电力电子设备中的串/并联谐振
- 广泛应用于电焊机，电源，感应加热设备等谐振场合
- Widely used in DC-Link circuit for High-frequency filtering and decoupling
- Widely used in power electronic circuits, for coupling purposes
- Widely used in power electronic devices in series/parallel resonant circuit
- Widely used in welding, power supplies, induction heating equipment resonance occasions

技术要求 Specifications

滤波/耦合电容 Filter/Coupling Capacitor	执行标准 Reference Standard	GB/T 17702、IEC 61071
	气候等级 Climatic Category	40/85/21
	额定电压 Rated Voltage	350V.DC~2000V.DC
	容量范围 Capacitance Range	10 μ F ~ 200 μ F
	容量偏差 Capacitance Tolerance	$\pm 5\%$ (J), $\pm 10\%$ (K)
	极间耐电压 Voltage Test Between Terminals	1.5Un (VDC) /10S
	绝缘电阻 Insulation resistance	≥ 5000 s (20 $^{\circ}$ C, 100VDC, 1min)
谐振电容 Resonant Capacitor	执行标准 Reference Standard	GB/T 3984、IEC 60110
	气候等级 Climatic Category	40/85/21
	额定电压 Rated Voltage	1000V.DC~4000V.DC
	容量范围 Capacitance Range	0.01 μ F ~ 10 μ F
	容量偏差 Capacitance Tolerance	$\pm 5\%$ (J), $\pm 10\%$ (K)
	极间耐电压 Voltage Test Between Terminals	1.5Un (VDC) /10S
	绝缘电阻 Insulation resistance	≥ 5000 s (20 $^{\circ}$ C, 100V, 1min)

■ 外形尺寸 Dimensions (mm)

滤波/耦合电容 Filter/Coupling Capacitor							
C _N (μF)	ΦD (mm)	L (mm)	R _{esr} @10kHz (mΩ)	ESL (nH)	DV/DT (V/μs)	Ī (A)	I _{max} @40°C 10kHz (A)
Un=350-700V Us=525-1050V Ur=100-200Vac							
20	38	40	3.3	25	60	1200	30
30	45	40	3.2	25	60	1800	40
40	45	50	3.0	25	50	2000	35
50	49	50	3.0	25	50	2500	40
60	54	50	3.0	25	50	3000	45
100	62	60	2.9	25	40	4000	50
Un=800V Us=1200V Ur=250Vac							
20	44	40	2.9	25	60	1200	39
30	54	40	2.7	25	70	2100	43
40	62	40	2.5	25	70	2800	50
50	69	40	2.1	25	75	3750	55
60	64	50	2.3	25	60	3600	55
70	70	50	2.0	25	60	4200	60
80	73	50	2.1	25	60	4800	60
100	82	50	1.8	25	60	6000	65
Un=1000-1100V Us=1500-1650V Ur=270-300Vac							
10	42	40	3.3	25	60	600	35
20	50	50	3.1	25	60	1200	40
30	60	50	3.1	25	60	1800	55
40	69	50	2.7	25	60	2400	60
50	68	60	2.6	25	50	2500	60
60	75	60	2.2	25	50	3000	70
70	81	60	1.9	25	50	3500	70
80	86	60	1.6	25	50	4000	75
Un=1400V Us=2100V Ur=380Vac							
5	46	40	3.3	25	60	300	36
10	48	60	3.3	25	60	600	38
20	67	60	3.1	25	60	1200	60
Un=1800V Us=2100V Ur=380Vac							
8	46	60	3.3	25	75	600	35
10	50	60	3.3	25	75	750	40

谐振电容 Resonant Capacitor							
C _N (μF)	Dimension (mm)			R _{esr} @10kHz (mΩ)	DV/DT (V/μs)	Ī (A)	I _{max} @40°C 10kHz (A)
	ΦD	L	L1				
Un=1200V Urms=500Vac Up=710Vac							
1.5	46	37	50	5.3	800	1200	45
3	45	44	60	4.3	620	1860	40
5	58	44	60	3.5	500	2500	53
8	73	44	60	3	400	3200	65
Un=2000V Urms=750Vac Up=1050Vac							
1.5	50	40	54	5.3	1000	1500	48
3	59	44	60	4.3	650	2200	55
4	68	44	60	4	550	1950	62
6	83	44	60	3.2	480	2880	75
Un=3000V Urms=1200Vac Up=1700Vac							
0.33	43	44	60	38	1800	594	40
0.47	51	44	60	27	1700	799	48
0.5	53	44	60	25	1600	800	50
0.68	61	44	60	18.7	1500	1020	56
0.75	64	44	60	16.9	1400	1050	60
0.8	66	44	60	15.9	1350	1080	62
1.2	81	44	60	10.6	1250	1500	75
Un=4000V Urms=1500Vac Up=2100Vac							
0.08	46	60	72	60	3000	240	40
0.1	51	60	72	48	2850	285	45
0.12	56	60	72	39	2750	330	50
0.15	63	60	72	32	2500	375	58
0.18	64	60	72	26.5	2400	432	60
0.25	80	60	72	19.1	2200	550	75
0.33	52	60	72	14.4	2000	660	48
0.47	62	60	72	10.2	1800	846	58
0.5	64	60	72	9.5	1700	850	60
0.68	75	60	72	7	1600	1088	70
0.75	78	60	72	6.4	1500	1125	72